

Electrocardiogram (ECG) HRWLLA_ECG_001

Purpose

To provide a high throughput method to obtain Electrocardiograms in a conscious mouse.

Experimental Design

- **Minimum number of animals** : 5M + 5F
- **Age at test:** Week 55
- **Sex:** We would expect the results of this test to show sexual dimorphism

Procedure

1. The lead plates are to be snapped into place onto the top of the pre-amplifier tower. The covering is removed to reveal three gel coated pads surrounded by a sticking plate. The plate will need to be covered with the extra cover in the package.
2. Turn on the combined amplifier and the pre-amplifier tower.
3. Double click the icon ECG acquisition on the acquisition computer.
4. Open the ECG set up file (for default settings).
6. Place mouse on pad, lowering the Red Acrylic Cubby to surround the mouse on 3 sides discouraging escape.
7. Press Start.
8. After the desired acquisition time, (5-10 minutes) stop the reading. There will be one long reading.
9. Save the data.
10. For additional readings create a new session using the same settings as before.
11. When saving sections with good readings, highlight the selected area and then save.

Notes

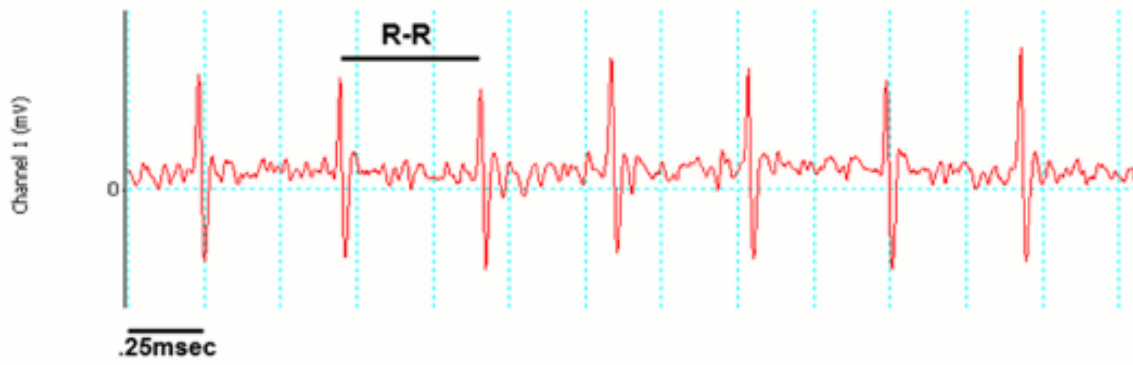
Data Analysis

1. Open Emouse Analyses icon
2. Select ECG signals
3. Choose folder (all readings in folder will show)
4. Click PNN X (for mice: N-N> than 6 ms)
5. Choose file(s) by highlighting
6. Go
7. Bottom file is the corrected file
8. Red dots should be on peak of R waves, if image appears inverted click invert
9. Click Add, or minus if R waves are not marked with red dots or if too many are marked
 - L click to zoom in

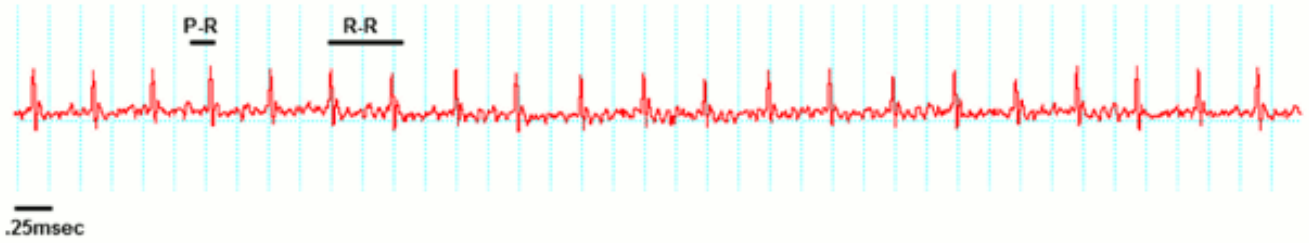
- R click to zoom out
10. 'What if?' button to remove unwanted sections
 - L click image (zooms in)
 - L click left boundary
 - L click right boundary
 11. Options- click more if want to exclude more sections
 12. Undo available
 13. Go
 14. Here can input animal data if desired
 15. Save- For the first mouse in in group, hit save, a new results folder will be created within the folder with the mouse data. Then can click quick save or next.
 16. For the rest of the mice in the series, can hit quick save at this point- saves in last selected file – will group all files together in same excel sheet.
 17. Open Emouse Analyses icon
 18. Select ECG signals
 19. Choose folder (all readings in folder will show)
 20. Click PNN X (for mice: N-N> than 6 ms)
 21. Choose file(s) by highlighting
 22. Go
 23. Bottom file is the corrected file
 24. Red dots should be on peak of R waves, if image appears inverted click invert
 25. Click Add, or minus if R waves are not marked with red dots or if too many are marked
 - L click to zoom in
 - R click to zoom out
 26. 'What if?' button to remove unwanted sections
 - L click image (zooms in)
 - L click left boundary
 - L click right boundary
 27. Options- click more if want to exclude more sections
 28. Undo available
 29. Go
 30. Here can input animal data if desired
 31. Save- For the first mouse in in group, hit save, a new results folder will be created within the folder with the mouse data. Then can click quick save or next
 32. For the rest of the mice in the series, can hit quick save at this point- saves in last selected file - will group all files together in same excel sheet

Examples of good readings

A



B



Data QC

Analysis room should be dim and quiet. Keep the door closed preferably while analysis is taking place.

Figure A. Taking a reading

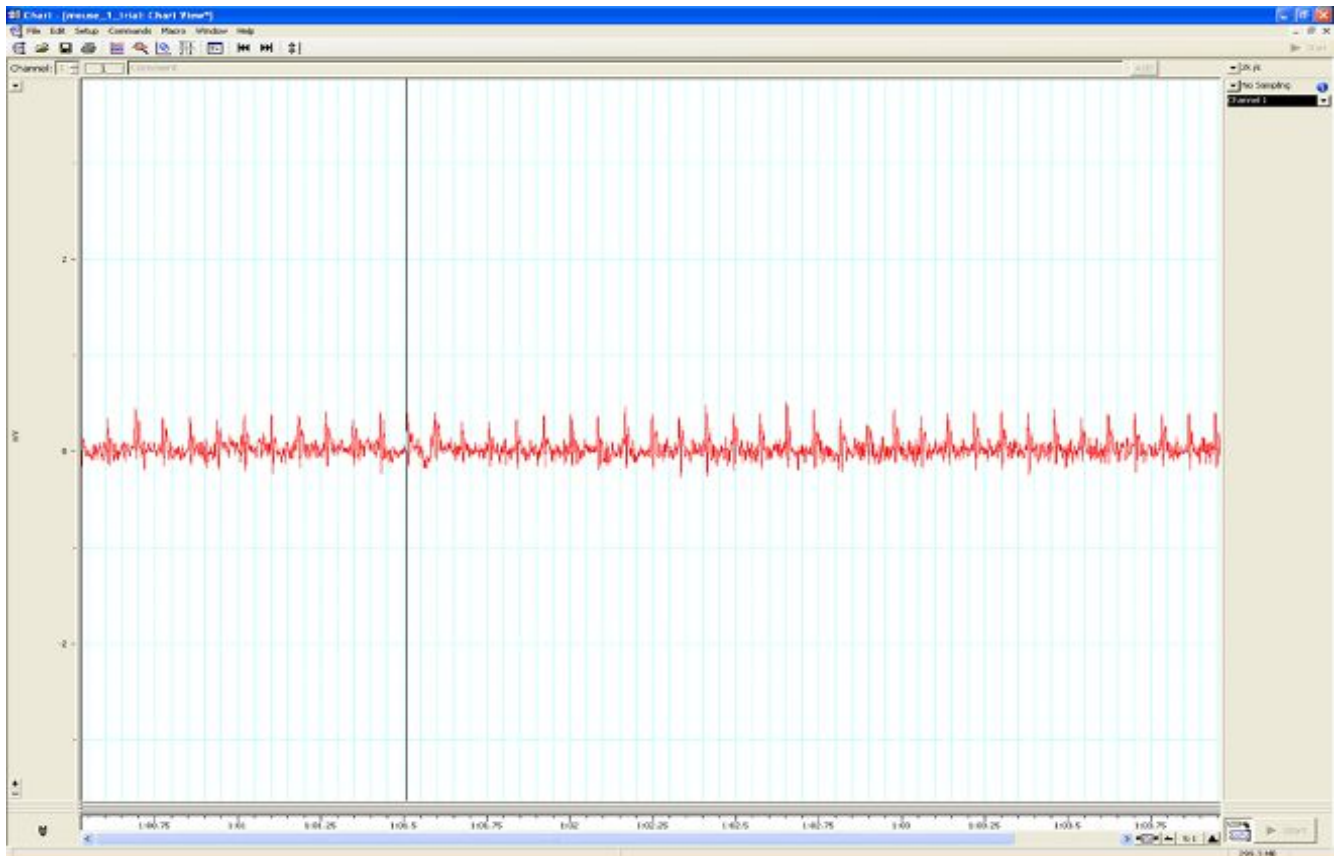


Figure B. Saving a section of the reading

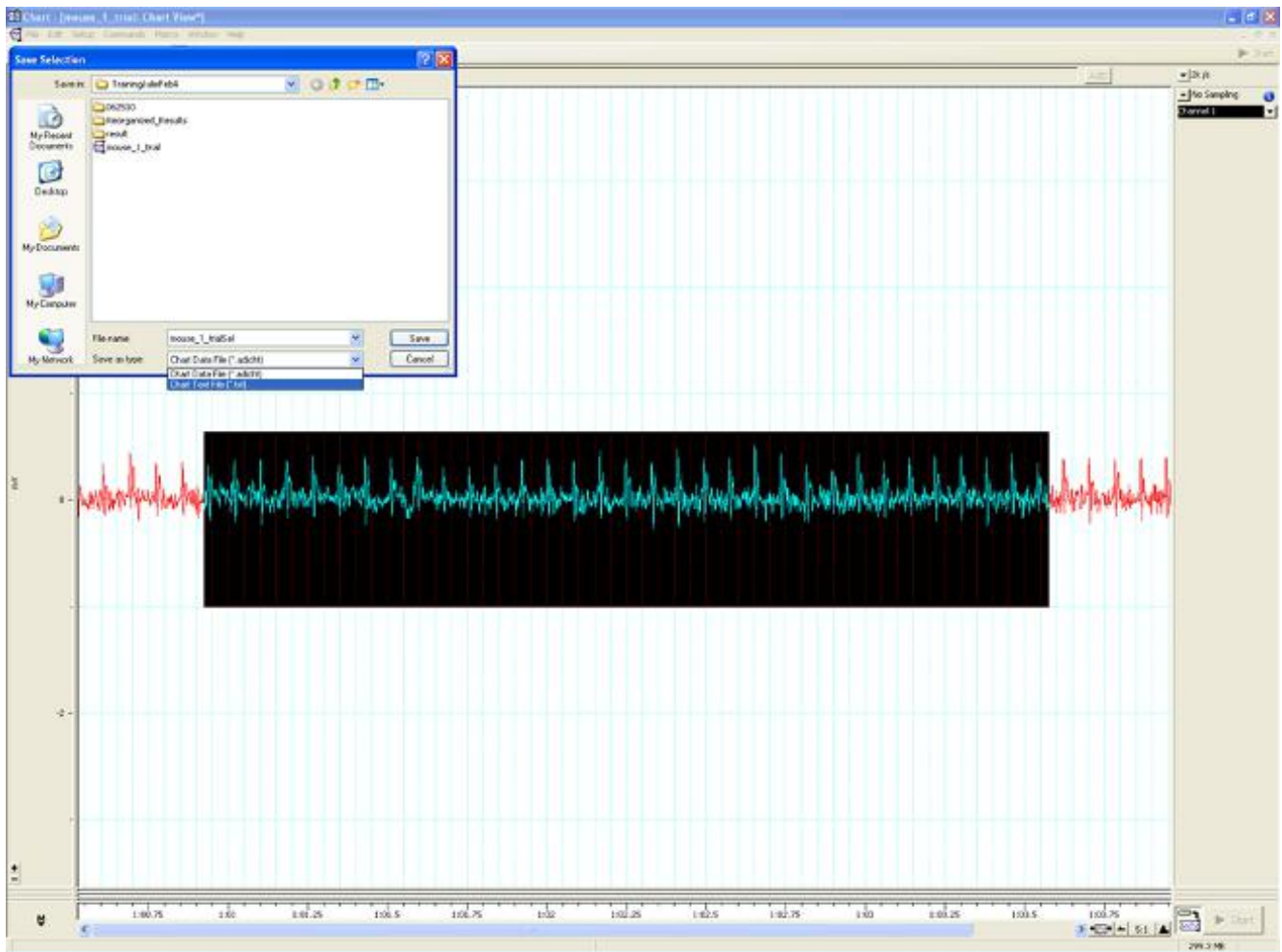
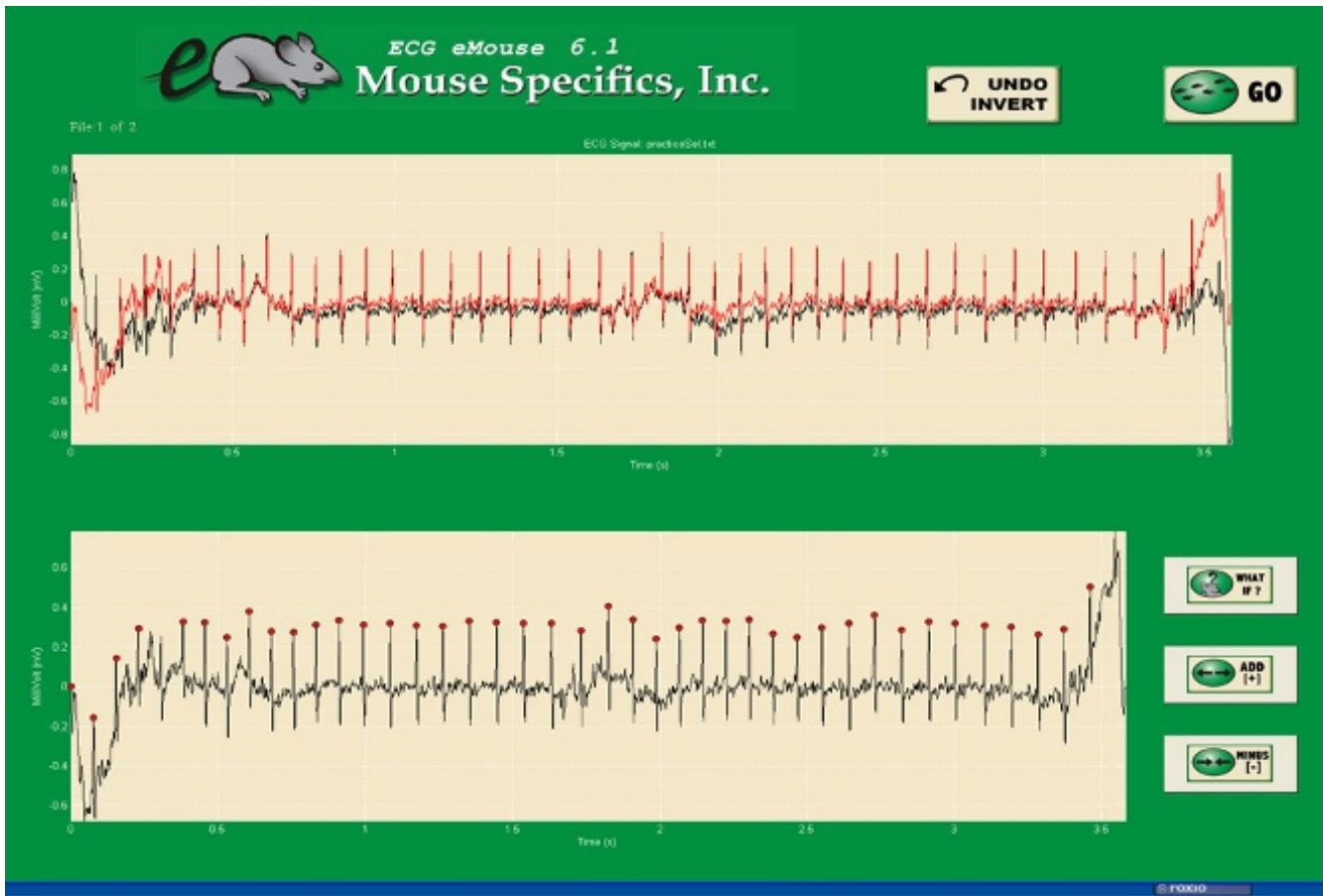


Figure C. Analysis phase, with the options to remove sections on the 'What if?' button below.



Parameters and Metadata

QTc Dispersion HRWLLA_ECG_011_001 | v1.0

simpleParameter

Req. Analysis: false

Req. Upload: false

Is Annotated: false

Unit Measured: ms

Experimenter ID HRWLLA_ECG_020_001 | v1.0

procedureMetadata

Req. Analysis: false

Req. Upload: true

Is Annotated: false

Light level HRWLLA_ECG_022_001 | v1.0

procedureMetadata

Req. Analysis: false

Req. Upload: false

Is Annotated: false

rMSSD HRWLLA_ECG_014_001 | v1.0

simpleParameter

Req. Analysis: false

Req. Upload: false

Is Annotated: true

Unit Measured: ms

Anesthetic HRWLLA_ECG_019_001 | v1.0

procedureMetadata

Req. Analysis: true

Req. Upload: true

Is Annotated: false

Options: No anesthesia, Avertin, Tribromoethanol, Isoflurane,

PQ HRWLLA_ECG_005_001 | v1.0

simpleParameter

Req. Analysis: false

Req. Upload: false

Is Annotated: true

Unit Measured: ms

RR HRWLLA_ECG_004_001 | v1.2

simpleParameter

Req. Analysis: false

Req. Upload: true

Is Annotated: true

Unit Measured: ms

Date equipment last calibrated HRWLLA_ECG_023_001 | v1.1

procedureMetadata

Req. Analysis: false

Req. Upload: false

Is Annotated: false

Equipment ID HRWLLA_ECG_016_001 | v1.0

procedureMetadata

Req. Analysis: false

Req. Upload: true

Is Annotated: false

CV HRWLLA_ECG_003_001 | v1.0

simpleParameter

Req. Analysis: false

Req. Upload: false

Is Annotated: true

Unit Measured: %

QTc HRWLLA_ECG_009_001 | v1.0

simpleParameter

Req. Analysis: false

Req. Upload: false

Is Annotated: false

Unit Measured: ms

Waveform Image HRWLLA_ECG_025_001 | v1.0

seriesMediaParameter

Req. Analysis: false

Req. Upload: false

Is Annotated: false

Increments: Minimum 1

PR HRWLLA_ECG_006_001 | v1.1

simpleParameter

Req. Analysis: false

Req. Upload: true

Is Annotated: true

Unit Measured: ms

Analysis Software HRWLLA_ECG_024_001 | v1.0

procedureMetadata

Req. Analysis: true

Req. Upload: false

Is Annotated: false

Options: Matlab, eMouse,

QRS HRWLLA_ECG_007_001 | v1.2

simpleParameter

Req. Analysis: false

Req. Upload: true

Is Annotated: true

Unit Measured: ms

HR HRWLLA_ECG_002_001 | v1.1

simpleParameter

Req. Analysis: false

Req. Upload: true

Is Annotated: true

Unit Measured: bpm

Equipment Manufacturer HRWLLA_ECG_017_001 | v1.0

procedureMetadata

Req. Analysis: true

Req. Upload: true

Is Annotated: false

Options: AD Instruments, World Precision Instruments, Mouse Specifics, Inc.,

pNN5(6>ms) HRWLLA_ECG_015_001 | v1.2

simpleParameter

Req. Analysis: false

Req. Upload: false

Is Annotated: false

Unit Measured: %

HRV HRWLLA_ECG_010_001 | v1.0

simpleParameter

Req. Analysis: false

Req. Upload: false

Is Annotated: true

Unit Measured: bpm

Equipment Model HRWLLA_ECG_018_001 | v1.0

procedureMetadata

Req. Analysis: true

Req. Upload: true

Is Annotated: false

Options: Iso-DAM8A, ML866, ML826/FE132, ECGenie + gel pads, ML870/p, ECGenie, PowerLab: 4/35,

Mean R amplitude HRWLLA_ECG_013_001 | v1.1

simpleParameter

Req. Analysis: false

Req. Upload: false

Is Annotated: false

Unit Measured: mV

ST HRWLLA_ECG_008_001 | v1.0

simpleParameter

Req. Analysis: false

Req. Upload: true

Is Annotated: true

Unit Measured: ms

Mean SR amplitude HRWLLA_ECG_012_001 | v1.1

simpleParameter

Req. Analysis: false

Req. Upload: false

Is Annotated: false

Unit Measured: mV

Number of signals HRWLLA_ECG_001_001 | v1.2

simpleParameter

Req. Analysis: false

Req. Upload: true

Is Annotated: false

Waveform Image Comment HRWLLA_ECG_026_001 | v1.0

simpleParameter

Req. Analysis: false

Req. Upload: false

Is Annotated: false

Noise level HRWLLA_ECG_021_001 | v1.0

procedureMetadata

Req. Analysis: false

Req. Upload: false

Is Annotated: false
